

Maintenance tips and cleaning

zummo

Z06 NATURE

- We recommend the use of protective gloves when handling our juicers.
- Cleaning the squeezing system and front protector is recommended at least once a day.
- Do not forget to check the bark deposits promptly.
- All parts are dishwasher safe (except the front protection).



The front protectors of our juicers are made up of polycarbonate and ABS models, that is why we **recommend not** cleaning them in the dishwasher, to avoid scratches or damage.

Recommended washing frequency

zummo

Clean at least once a day the following components:

Squeezing area:

- Squeezed tray
- Blade
- Cups
- Filter tray and shaft
- Buckets
- Front protection
- Stainless steel front of the machine

Clean weekly or twice a week in necessary periods:

Feeder:

- Machine roof.
- Feed ramp.

Products to use

The machines must be cleaned and disinfected with the aforementioned periodicity. In this process, first of all, all solid residue will be removed and then it will be cleaned and disinfected. The following types of products can be used to disinfect machines:

Food-grade descaling/disinfectant detergents: used either by immersion (small parts) or by spraying (large parts and stainless steel front of the machine) in the concentration recommended by the manufacturer. It must be allowed to act for the time indicated on each product and then a good rinse must be carried out in order to avoid contact of the juice with the product. These products usually have a very high PH that, over time, can degrade the PC, so it is recommended not to exceed the product's action times on transparent plastic parts.

Food grade chlorinated disinfectant detergents: same use as the previous ones. They can be used by immersion or spraying, taking into account the manufacturer's time recommendations. Thoroughly rinse the treated parts before they come into contact with the juice again.

Another option may be solutions with household bleach (4% chlorine) or industrial use (10% chlorine). The concentration needed to be effective at room temperature is 100 ppm, which means 2.5 ml of household bleach per liter of water or 1 ml of industrial bleach per liter of water.

C/ Cádiz, 4 - 46113 Moncada - Valencia (Spain) - (+34) 961 301 246 - zummo@zummo.es - www.zummocorp.com

ASSEMBLY



1. Fit the drip tray and grid.



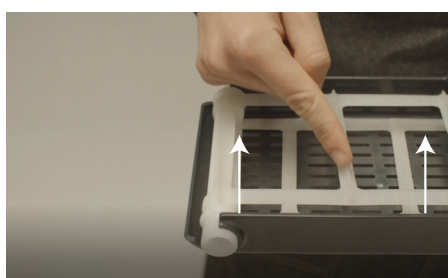
2. Mount the juice extraction system



3. Screw the nuts.



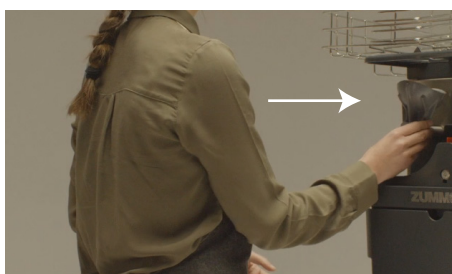
4. Fit the scraper with its shafts and insert them into the filter.



5. Place the scraper relief upwards.



6. Fit the filter tray.



7. Fit the cups.



8. Firmly screw the nuts.



9. Each container in the correct position in the groove.



10. Fit the front cover.

DISASSEMBLY



1. With the machine stopped press the off button.



2. Extract the front cover.



3. Remove containers



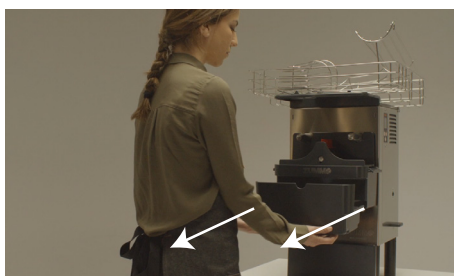
4. Fit the blade protector.



5. Unscrew the nuts.



6. Extract the cups.



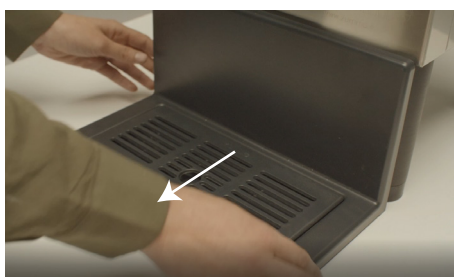
7. Remove the filter tray.



8. Unscrew the nuts.



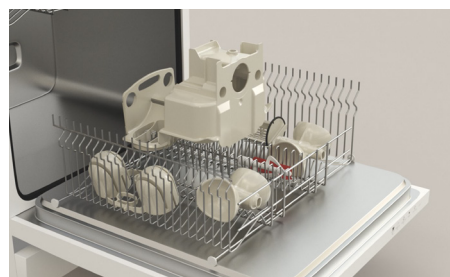
9. Extract the juice extraction system.



10. Remove the drip tray and grid.



11. Clean all parts with water and liquid detergent



Also suitable for dishwashers
(Except front cover)

zummo

P.O. Box 23 | C/Cádiz, 4, 46113 Moncada. Valencia. Spain. zummo@zummo.es | www.zummocorp.com | (+34)961 301 246